

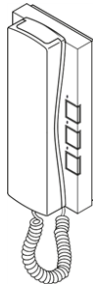


GDX Next Audio Handset

Quick Start Guide v1.0

November 2025

p/n: **HSA** GDX Next Audio Handset



Technical Documentation

1

Doc ref: GDX_HSA_Install_v1

WEEE Directive and Product Disposal



At the end of its serviceable life this product should not be treated as household or general waste. It should be handed over to the applicable collection point for the recycling of electrical and electronic equipment or returned to the supplier for disposal.

Disclaimer

COMELIT-PAC Ltd. does not assume any responsibility for:

- Any purpose other than the intended use.
- Failure to observe the indications and warnings contained in this manual / instruction sheet.



COMELIT-PAC Ltd. reserves the right to change the information provided in this manual at any time and without prior notice.



×1

P/N HSA (GDX Next Audio Handset)

3

Health & Safety



Failure to follow installation instructions may increase the risk of injury or death by electric shock, and may cause damage to hardware.

Intended use

This product is designed and manufactured for use in the creation of audio and video communication systems in residential and public buildings.

Installation and Safe usage

COMELIT-PAC products must be installed to:

- Meet the requirements of the country of installation's National Wiring Regulations (BS7671, IET National Wiring Regulations in the UK) and EN60950-1.
- Be carried out by suitably competent, qualified and experienced personnel.
- Comply with any local fire, health and safety regulations.
- Ensure the system created using COMELIT-PAC products has not been tampered with / damaged.
- Hardware and controllers (e.g. entrance panels, readers, door controllers, etc.) must be earthed.
- Hardware must be isolated at the power supply before commencing work on the unit(s).

Cabling

Control systems' cabling should be installed to reduce interference with other equipment and / or building environment.

- Avoid running system cables alongside any heavy load switching cables.
- Alternatively, use screened cable and / or cross the cable at right angles every 1–2 m / 3–6 ft.
- To ensure safety, compliance, and ease of maintenance, we strongly recommend that all Extra Low Voltage (ELV) cabling be installed using dedicated sectioned cable trays or protective tubing.

For new installations

- Communication connections 2-wire 0.5mm².
- Retrofit communication connections CW1308 1-pair or 2-pair.

For retrofit options



For existing cabling, use cables with a cross-section suited to the current requirements and distances involved for data connections.

Maintenance

- All damaged or faulty products must be reported to COMELIT-PAC Technical Support.
- Any attempt to carry out repairs or modification to the electronic components or the physical product will void the product warranty.
- Check the product manual for any instructions regarding routine cleaning.
- Do not use alcohol or aggressive products for cleaning purposes.

ESD Precautions

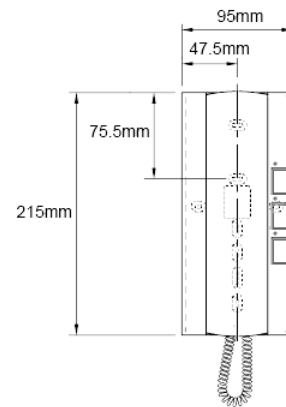
The product contains static-sensitive devices and earth grounding strap should be worn when handling the hardware.

Equipment Electrical Rating

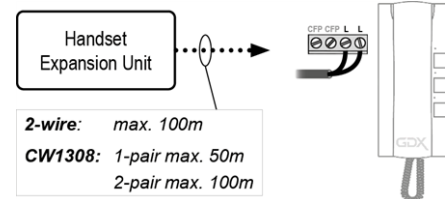
All electrical equipment should have electrical ratings clearly stated on an identification label and in any documentation provided. Any applicable fuse ratings will also be specified within the documentation.

2

1.0 Installation

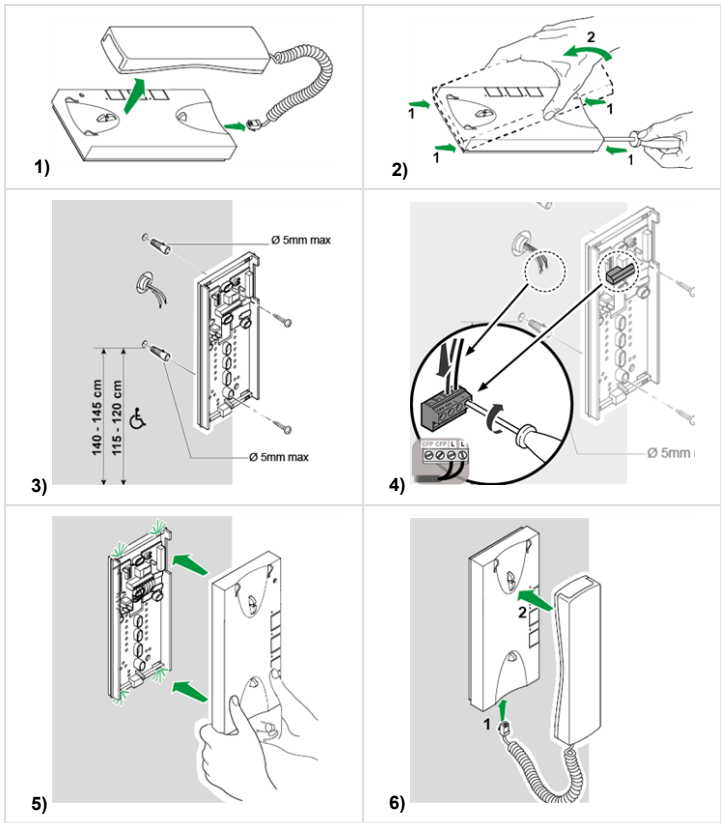


Wiring distances



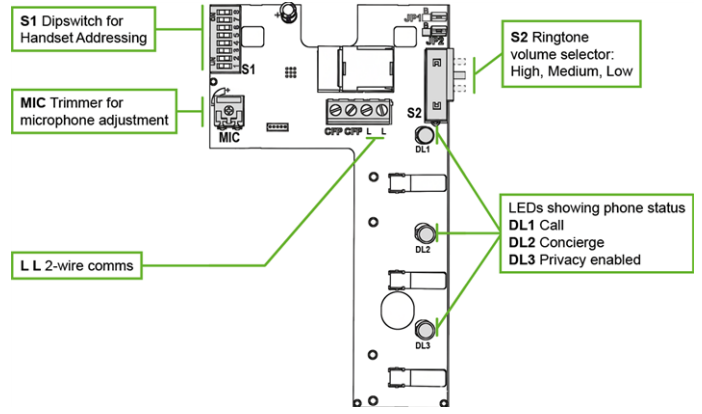
These distances apply to both Audio and Video Handsets

4



5

2.0 PCA Orientation



3.0 Handset Addressing

To set the address of the handset push the relevant dip-switches to ON.

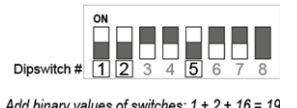


Address table

17	1.5
18	2.5
19	12.5
20	3.5
21	13.5

Handset address = 19

Binary value



Power is not needed to program the handset.

6

Table of Handset Address codes

Addr	Switch
1	1
2	2
3	12
4	3
5	13
6	23
7	123
8	4
9	14
10	24
11	124
12	34
13	134
14	234
15	1234
16	5
17	15
18	25
19	125
20	35
21	135
22	235
23	1235
24	45
25	145
26	245
27	1245
28	345
29	1345
30	2345
31	12345
32	6
33	16
34	26
35	126
36	36
37	136
38	236
39	1236
40	46
41	146
42	246
43	1246
44	346
45	1346
46	2346
47	12346
48	56
49	156
50	256
51	1256
52	356
53	1356
54	2356
55	12356
56	456
57	1456
58	2456
59	12456
60	3456
61	146
62	246
63	1246
64	346
65	1346
66	2346
67	12346
68	56
69	156
70	256
71	1256
72	356
73	1356
74	2356
75	12356
76	456
77	1456
78	2456
79	12456
80	3456
81	13456
82	23456
83	123456
84	357
85	1357
86	2357
87	12357
88	457
89	1457
90	2457
91	12457
92	3457
93	13457
94	23457
95	123457
96	67

7

Technical Support

pacgdxsupport@comelit-pac.co.uk
 T: +44 (0)1707 377203

Training

trainingacademy@comelit-pac.co.uk
 T: +44 (0)1707 377203



Technical Documentation



For more address codes please see the Full Installation Manual via the QR code

Code 240 is reserved for Concierge if available.

8